

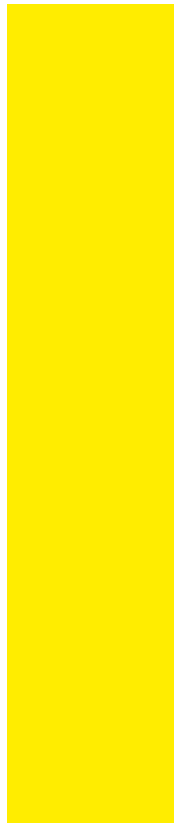
Graphics & Signage



T +61 7 3308 3119
F +61 7 3308 3125
E graphicsdepartment@bcec.com.au
W www.bcec.com.au

The Centre is owned by South Bank Corporation
and proudly managed by AEG Ogden

more personal - **more** choice



Design, graphics & signage, all under one roof	2
Sustainable signage options	3
Registration Desk signage	4
Directional signage	5
Foyer theming	6
Great Hall branding	8
Outdoor signs	9



Design, graphics & signage, all under one roof

We are the only convention centre in Australia with an in-house Graphics & Signage Department that specialises in design, manufacture and project management.

From simple lectern signs to elaborate entrance feature displays to 17 metre banners and large format digital printing, we can provide clients with promotional, display and exhibition material for absolutely every event.

We offer a range of standard 'Branding Essentials' providing effective solutions to the signage needs of all events. The aim is to achieve maximum stand-out within all budgets. Focusing on the traffic flow of visitors, we ensure high impact and brand recall during your event.

Our resources and capabilities enable us to seamlessly handle external, non event related projects with the advantage of a high speed Artwork Transfer Site enabling clients to remotely access design and artwork files.

Our team is highly accomplished across all levels of the graphics industry and supported by the very latest design and production technology, enabling us to meet the most challenging of briefs on time and on budget.

Our full range of services includes

- Event signage & branding
- Graphic design
- Wide format printing
- Digitally printed PVC and fabric banners
- Digital posters in A1, A0 and custom formats
- Customised lectern signs
- A4 and A3 colour printing
- Promotional and signage systems
- Display systems



Sustainable signage options

Reduced energy to increased recycling

Sustainable business practices are at the core of the Centre's operation. Environmental integrity is fundamental to the daily operations with far reaching benefits for all.

The environmental efficiency of our in-house Graphics & Signage Department centres around the 3 Rs – Reduce, Re-use and Recycle!

We offer clients a choice of environmentally friendly products that greatly reduce the carbon footprint of their events. In most cases simply by making the right choices, significant reductions in the foot print of your event signage can be achieved without compromising the impact of your branding.

Options

- Registration Desk
custom designed re-usable panels
- Directory pods
panel graphics can be removed and panels re-used
- Vertical displays
removable graphics for re-use of displays
- Portable displays
a range of displays using enviro fabrics available for purchase

Sustainable banner types

- BIOflex™
- Evergreen

Registration desk

Option 1 - 18450mm x 1400mm

Description

Full reg top (banner) and bottom (decal)

Code

REG05EB



Option 2 - 18450mm x 1400mm

Description

Full reg top (banner)

Code

REG05E



Option 3 - 15000mm x 1400mm

Description

Custom size between 1.4m x 3-15m (Banner)

Code

REGCTM



Directional signage

Window Decals

Quality

Printed

Size

0.7 x 1.5m

Code

Win decals/Win decals R/P



Vertical

Quality

Printed

Size

1.07 x 2.35m

Code

VERCUR01
(curved front)



Easel

Quality

Printed

Size

A1, A0 & Custom

Code

DIR02



Pod

Quality

Printed

Size

1.08 x 2.35

Code

POD01 | POD02



Pull Up

Quality

Printed

Size

0.81 x 2.13 | 1.0 x 2.13

Code

DIRD580 | DIRD5100



BOX Build

Quality

Printed

Size

1.0 x 2.4 x 0.3

Code

BOX01 | BOX02 | BOX04



Foyer theming

Option	Code
Banner A	BAN-A
Banner B	BAN-B
Banner C	BAN-C
Banner A1	BAN-A1
Banner A2	BAN-A2
Banner A3	BAN-A3



Option	Code
Banner B1	BAN-B1
Banner B2	BAN-B2
Banner B3	BAN-B3
Banner B4	BAN-B4
Banner B5	BAN-B5
Banner B6	BAN-B6



Option	Code
Banner U1	BAN-U1
Banner U2	BAN-U2
Banner U3	BAN-U3



*All banner locations are subject to room hire.

Banners can be printed on matte/gloss banner, fabric & enviro products.



Foyer theming

Option	Code
Banner D	BAN-D
Banner E	BAN-E



Option	Code
Banner D1	BAN-D1
Banner D2	BAN-D2
Banner D3	BAN-D3
Banner E1	BAN-E1
Banner E2	BAN-E2
Banner E3	BAN-E3



Option	Code
Banner U4	BAN-U4
Banner U5	BAN-U5



*All banner locations are subject to room hire.

Banners can be printed on matte/gloss banner, fabric & enviro products.



Great Hall branding

Banner Single Sided

Code

Vomitory Banner - 360dpi/Matte/Fab	VOMB - 1.2 x 3.0
Printed Banner - 360dpi/Matte/Fab	GHB - 1.5 x 4.0
Printed Banner - 360dpi/Matte/Fab	GHB - 1.5 x 8.0
Printed Banner - 360dpi/Matte/Fab	GHB - 2.5 x 5.0
Printed Banner - 360dpi/Matte/Fab	GHB - 3.0 x 6.0
Printed Banner - 360dpi/Matte/Fab	GHB - 5.0 x 3.0
Printed Banner - 360dpi/Matte/Fab	GHB - 6.0 x 4.0
Printed Pole Wrap - 360dpi/Matte	POLEWRAP

Banner Double Sided

Code

Printed Banner - 360dpi/Matte/Voile	GHBDS - 1.5 x 4.0
Printed Banner - 360dpi/Matte/Voile	GHBDS - 1.5 x 8.0
Printed Banner - 360dpi/Matte/Gloss	GHBDS - 2.5 x 5.0
Printed Banner - 360dpi/Matte/Gloss	GHBDS - 3.0 x 6.0
Printed Banner - 360dpi/Matte/Gloss	GHBDS - 5.0 x 3.0
Printed Banner - 360dpi/Matte/Gloss	GHBDS - 6.0 x 4.0

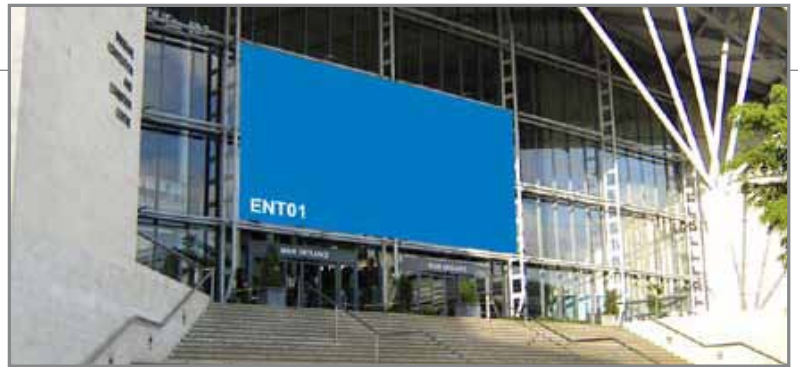
Banners can be printed on matte/gloss banner, fabric & enviro products.

**All banner locations are subject to room hire.*



Outdoor signs

Option	Code
Banner ENT01	ENT01
Banner ENT02	ENT02
Banner ENT03	ENT03
Banner ENT05	ENT05
Banner ENTEH2	ENTEH2
Banner BUS	ENTBUS
Banner ROAD	ENTROAD
Banner RAIL	ENTRAIL



Option	Code
Banner ENT05a	ENT05a
Banner ENT05b	ENT05b
Banner ENTEH2a <small>(Hand Rail Exhibition Hall 2)</small>	ENTEH2a



Banners can be printed on matte/gloss banner, fabric & enviro products.

**All banner locations are subject to room hire.*

