

Brisbane Convention & Exhibition Centre Art

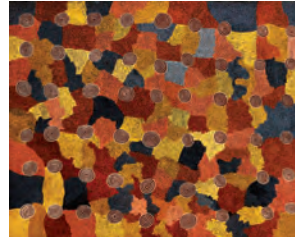
'The Brisbane Convention & Exhibition Centre's gallery and important contemporary Australian art collection is another unique cultural resource within our city's lively and diverse South Bank precinct.'

Queensland Art Gallery



Gideon Tjupurrula
Tingari Men

A large group of Tingari Men of the Dreamtime are here shown on one of their legendary journeys, from Mitukatjiri, south of Kintore, northwards to Pinarri, in the Gibson Desert.



Kaapa Tjampitjinpa
Flying Ants Dreaming

The Watunuma or Flying Ants Dreaming at Mikantiji, west of Yuendumu, is depicted in this painting. The concentric circles indicate the holes from which the ants emerge after the rain.



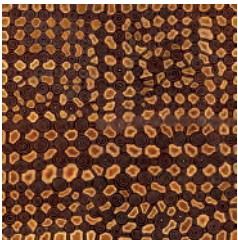
Hilary Tjapaltjarri
Mintjilpirri

The roundels in this painting represent the swampy area to the south-east of the Kintore Community known as Mintjilpirri. This is an important soakage water site where two Dreamtime snakes lived.



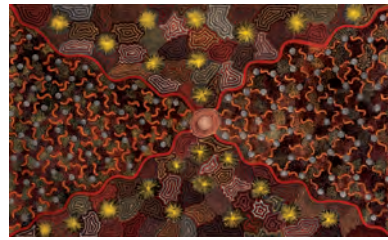
Johnny Warangula Tjupurrula
Tingari Cycle of Dreamtime

A large group of Tingari men are shown encamped at Tjikarri, north of Kintore and far to the west of Alice Springs. The concentric circles represent the Tingari while the background patterns indicate men's ceremonial body paint designs.



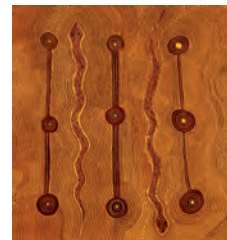
Dini Campbell Tjampitjinpa
Palipalintja

The site of Palipalintja, situated in sand hill country to the west of Jupiter Well, is represented in this work. In mythological times a group of Tingari Men made camp at this claypan where there is a small rockhole.



Pansy Napangati
Hailstone Dreaming at Ilpilpi

The small clumps of white dots are hailstones, and the small curved lines among these are sandhills. Spinifex clumps are indicated by the star-like shapes. Wavy lines represent water flowing from the spring at Ilpilpi, the concentric circle.



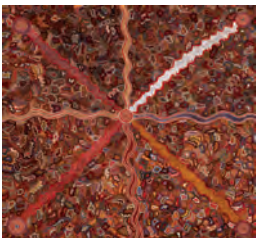
George Maxwell Tjangala
Lumpintja

The site of Lumpintja, a swampy area to the south of the Kintore Ranges, is represented in this work. In mythological times two men of the Tjangala kinship subsection lit a bush fire in the area.



Maxie Tjampitjinpa
Flying Ants

The Watunuma (Flying Ants) Dreaming at Waite Creek is celebrated in this painting. The horizontal band running across the painting indicates the flying ants beginning to swarm after rain.



Petra Nampitjinpa
Bush Fire Dreaming

In the Dreamtime a huge bush fire began at Warlukurlangu, west of Yuendumu, swept through Mt Liebig in the south-west, and continued on to Amata in South Australia. The central roundel is the site of the Dreaming at Mt Liebig with radiating lines indicating the path of the fire.



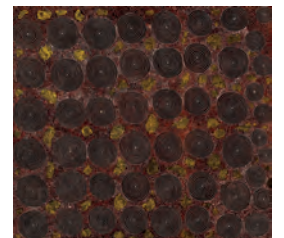
Billy Stockman Tjapaltjarri
Dreamtime Carpet Snake

Urnturrkuny, the Dreamtime Snake, is here shown at Iplitirra. At the bottom of the painting he appears having just emerged from one of his holes; at the top he is about to enter another.



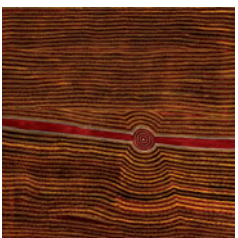
Turkey Tolson Tjupurrula
Two Travelling Women at Munni Munni

In mythological times the Two Travelling Women journeyed over a vast area of the central desert region. This painting shows them at the site of Munni Munni, to the south-east of the Kintore Community.



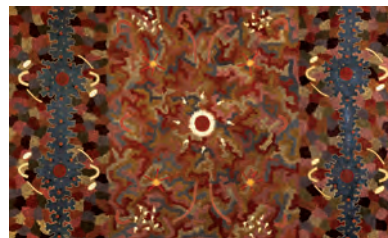
Anatjarri Tjakamarra
Kulkuta

The site of Kulkuta, approximately 120 kms south of the Kiwirrkura Community, is depicted in this painting.



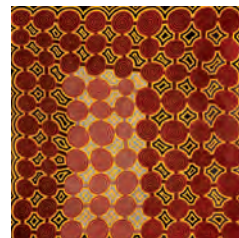
Mick Namarari Tjapaltjarri
Nyunman

The Dingo Dreaming site of Nyunman to the south-east of the Kintore Community, is represented in this work. In mythological times a dingo family was living at this place.



Clifford Possum Tjapaltjarri
Altywepe

The central roundel in this painting represents Altywepe, a soakage 10 miles east of Mt Allan and a plant of the same name which yields an edible seed. Above and below the symbol, the curved lines represent men's ceremonial body paint designs.



Ronnie Tjampitjinpa
Wilinkarra

In this painting the artist has shown the secret-sacred Tingari site of Wilinkarra (Lake Mackay). The roundels are designs used in the body decoration during the ceremonies and the grey section represents the lake.



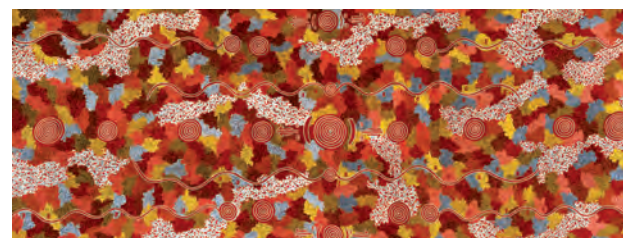
Colin Dixon Tjapanangka
Tanyinki

A large group of women of the Dreamtime are here shown gathering food and digging for honey ants.



Long Jack Phillipus Tjakamarra
Kalipinpa

Kalipinpa, is depicted in this painting. The concentric circles represent this site and the sinuous lines indicate flowing water.



Michael Nelson Tjakamarra
Two Dreamings

The central roundel represents a secret cave at Warlujarrayi, near Mt Singleton. Two Kangaroo Men, indicated by the half-arrow symbols, inadvertently cooked and ate a joey, thinking it was a bandicoot, near this cave.